

Shower Detail Drawings

Cross Sections - Shower System with pre-channeling for glass

- D01 Total System - Level Entry Channel Drain
- D02 Centre Drain or Off Centre Drain
- D03 Shower Upstand (Threshold)
- D04 Channel Drain - Floor to Wall Junction
- D05 Level Entry Shower Detail (U channel)
- D06 Typical Wall to Floor
- D07 Shower Flush Grate - Centre Waste
- D08 Setup for Level Entry Showers for Builders

Additional drawings with waterstop

- D09 Total System - Level Entry Channel drain with waterstop
- D10 Level Entry Shower Detail with waterstop (T channel)
- D11 Low Level Shower Hob Waterstop (50mm x 45mm)
- D12 Large Shower Hob Waterstop (65mm x 65mm)

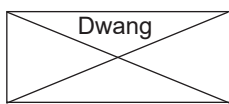
Cross Sections with Shower Glass Channel Details

- D13 Glass to Wall Plan
- D14 Glass to Painted Wall Plan
- D15 Glass to Corner Tiled Wall Plan - Level Entry Shower (Option A)
- D16 Glass to Corner Tiled Wall Plan - Level Entry Shower (Option B)
- D17 Glass to Corner Tiled Wall Plan - Threshold Shower
- D18 Glass to Corner Tiled Wall Plan - Threshold Shower

Miscellaneous

- D23 Warmup Shower Design Setup
- D24 Typical Wall to Floor
- D25 Clamp Flange Detail
- D26 Tiled Bath Plinth
- D27 Free Standing Bath Detail
- D28 Shower Over Bath Wall Detail
- D29 Setup for 80mm Warmup Clamp waste for channel drain
- D30 Floating tile channel against the wall
- D31 Floating tile channel off the wall
- D32 Waterproofing with Tiling to Window Reveal
- D33 Typical Jamb & Sill internal waterproofing detail
- D34 Skirting Waterproofing Detail

Cross Sections - Shower System (with pre-channeling for glass)

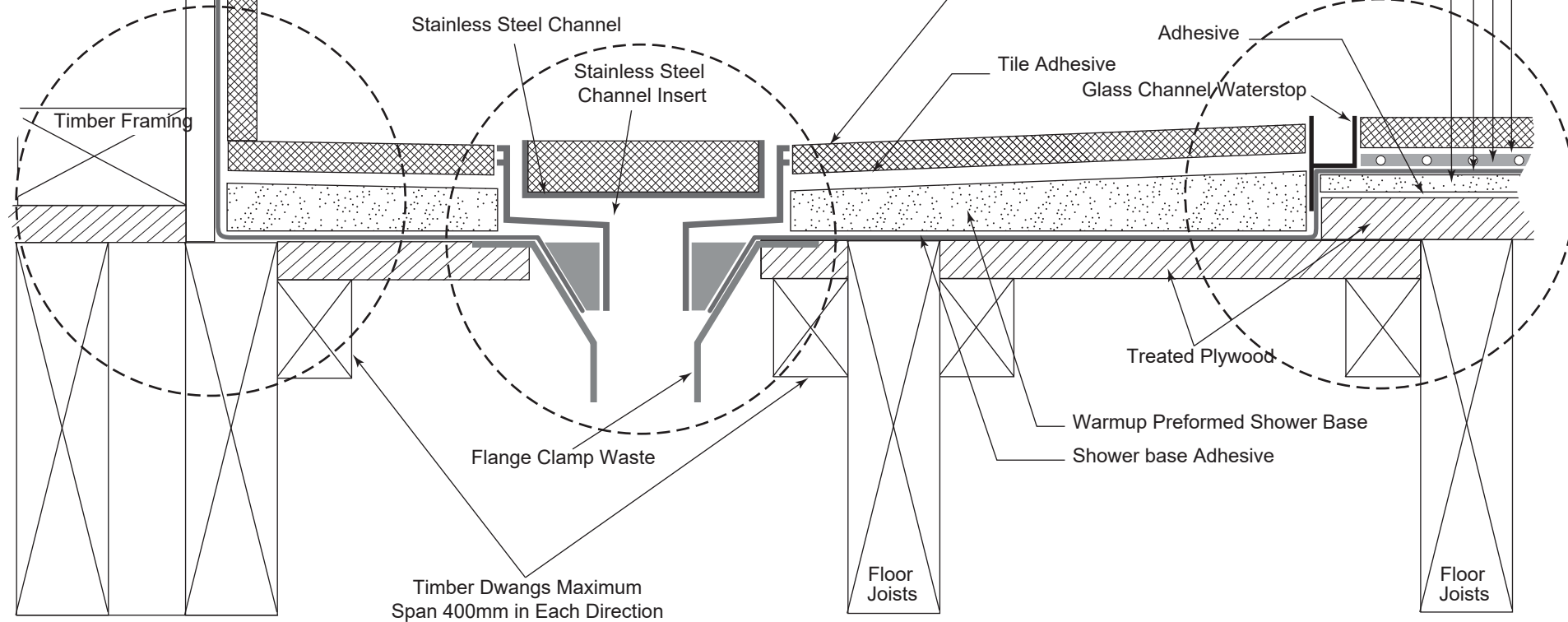


Selected Wall Tiles

Tile Adhesive

Warmup
Waterproof
Sheet Membrane

Wallboard
lining specified



Stainless Steel Channel

Stainless Steel
Channel Insert

Selected Floor Tiles

Tile Adhesive

Adhesive
Glass Channel Waterstop

Tile Adhesive

Warmup Undertile Heating

Warmup Waterproof
Sheet Membrane

Underlay

Treated Plywood

Warmup Preformed Shower Base

Shower base Adhesive

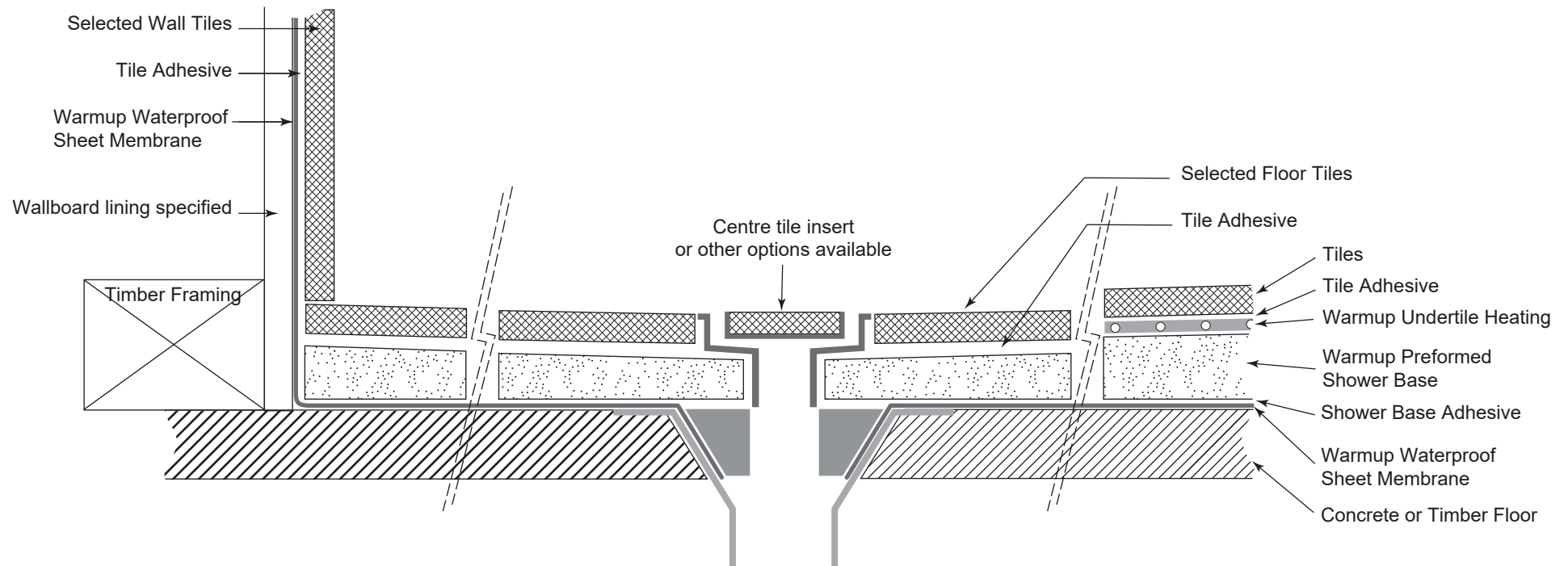
Flange Clamp Waste

Timber Dwangs Maximum
Span 400mm in Each Direction

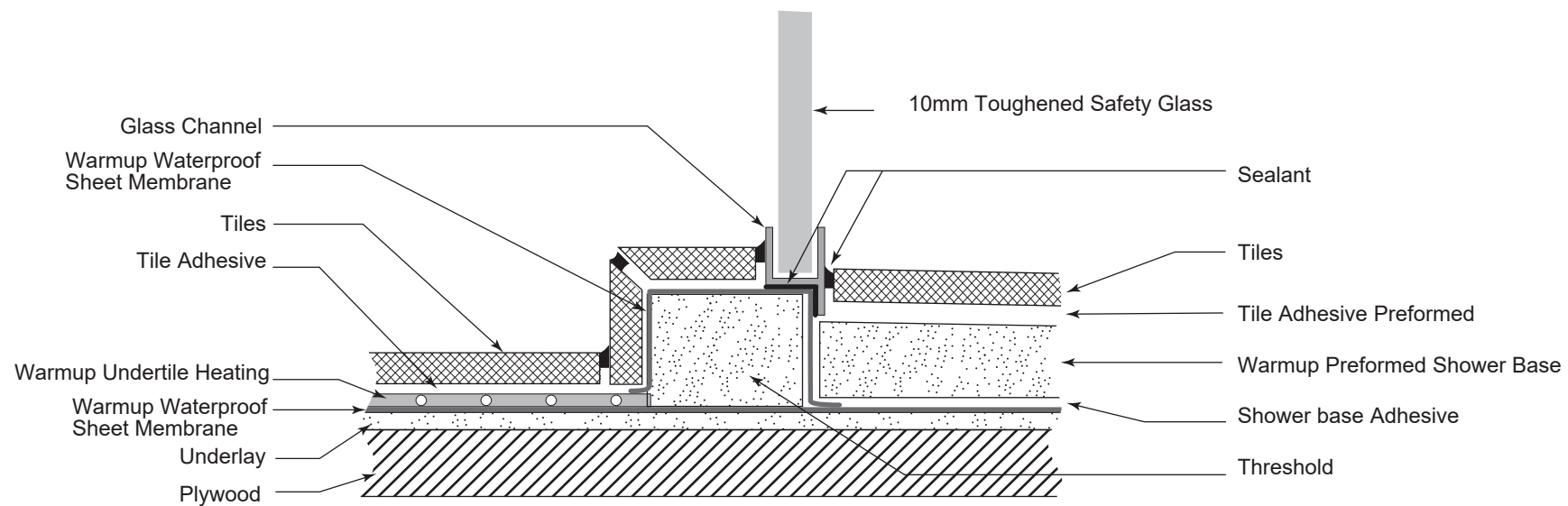
Floor
Joists

Floor
Joists

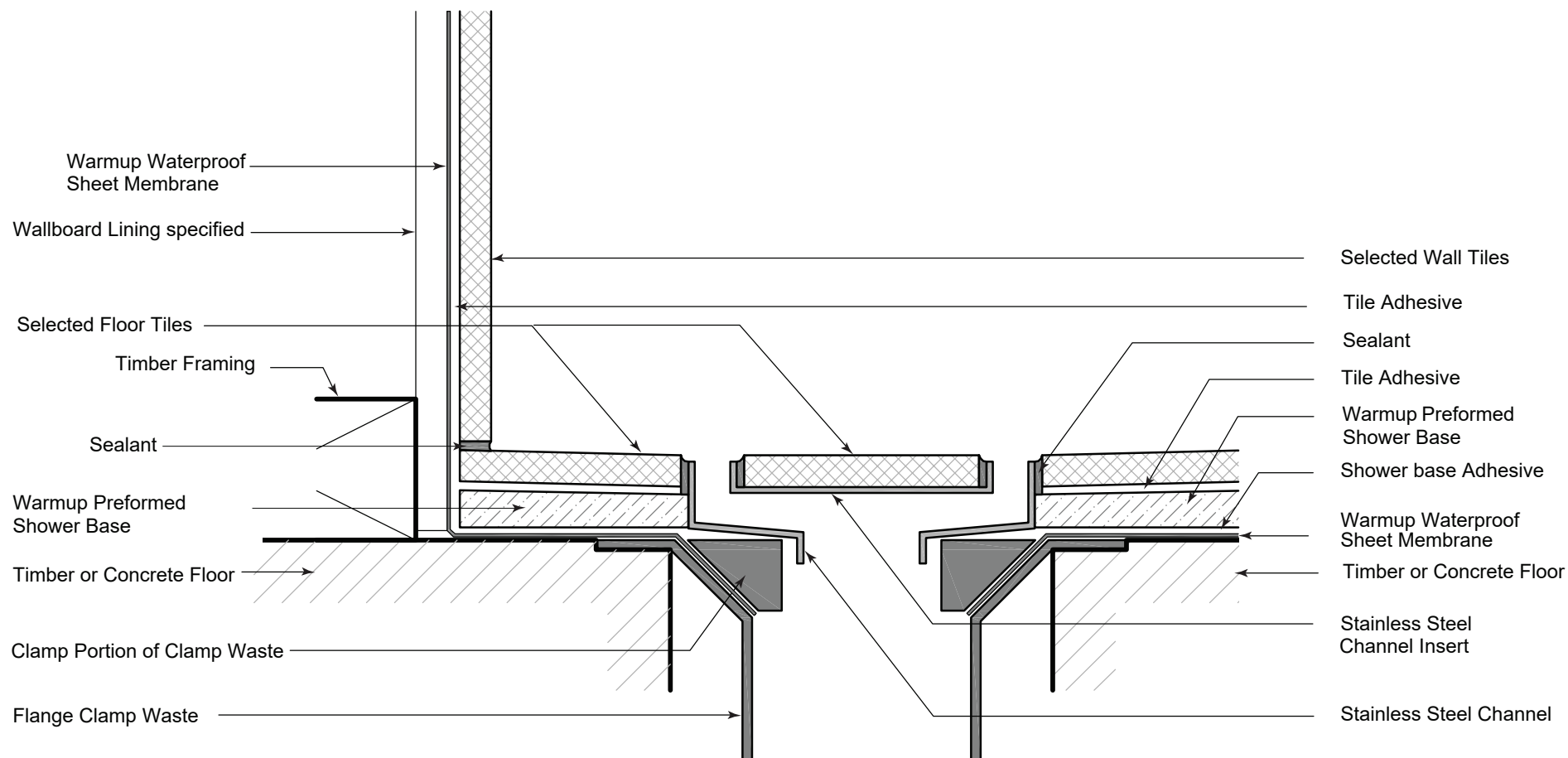
1:2

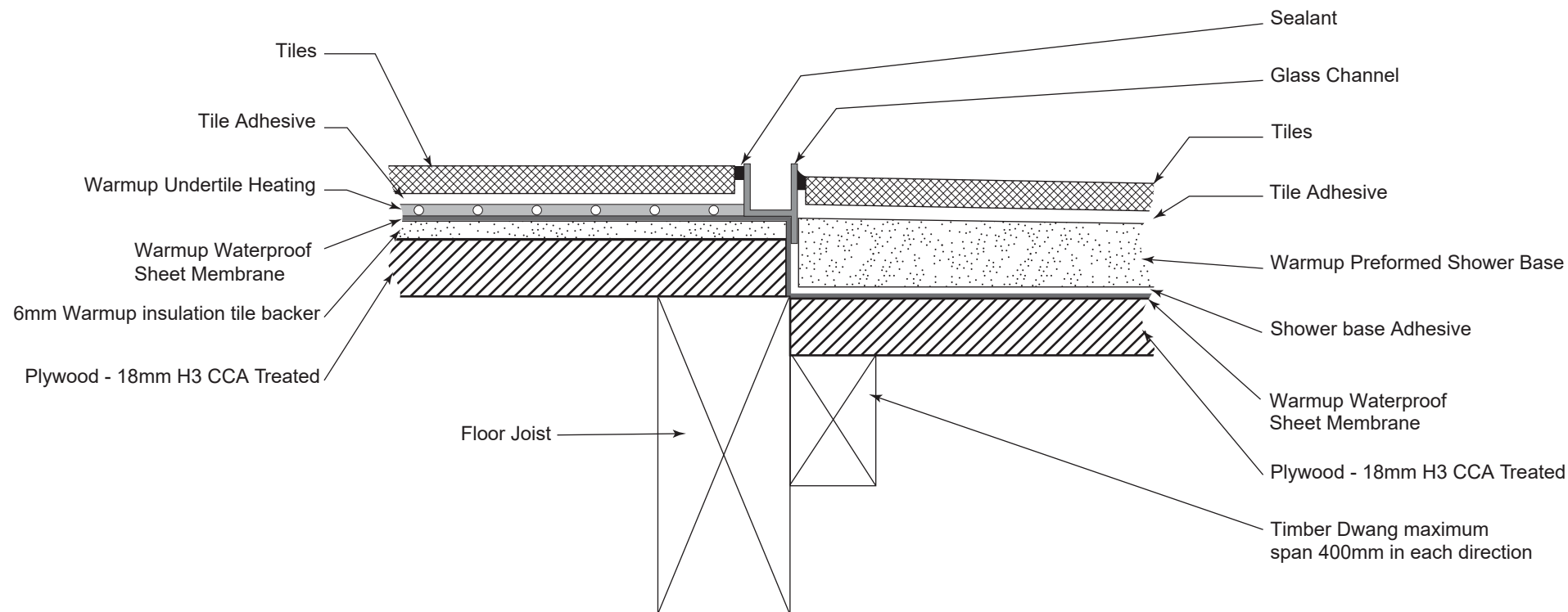


1:2

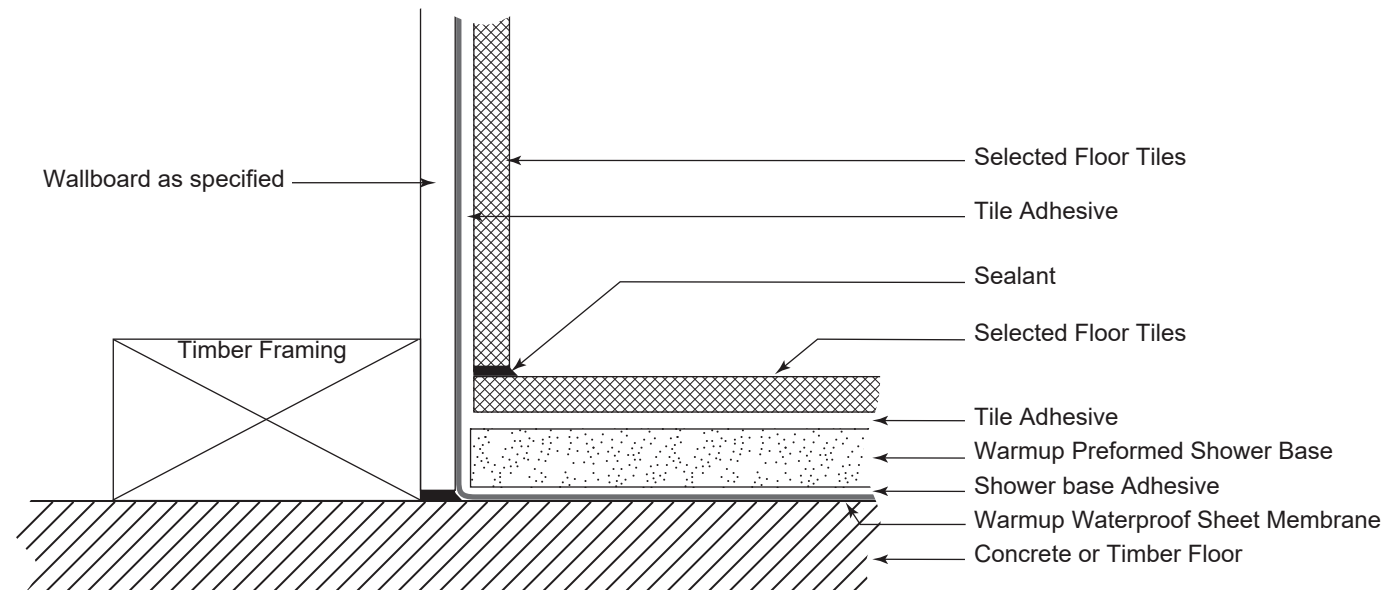


1:2

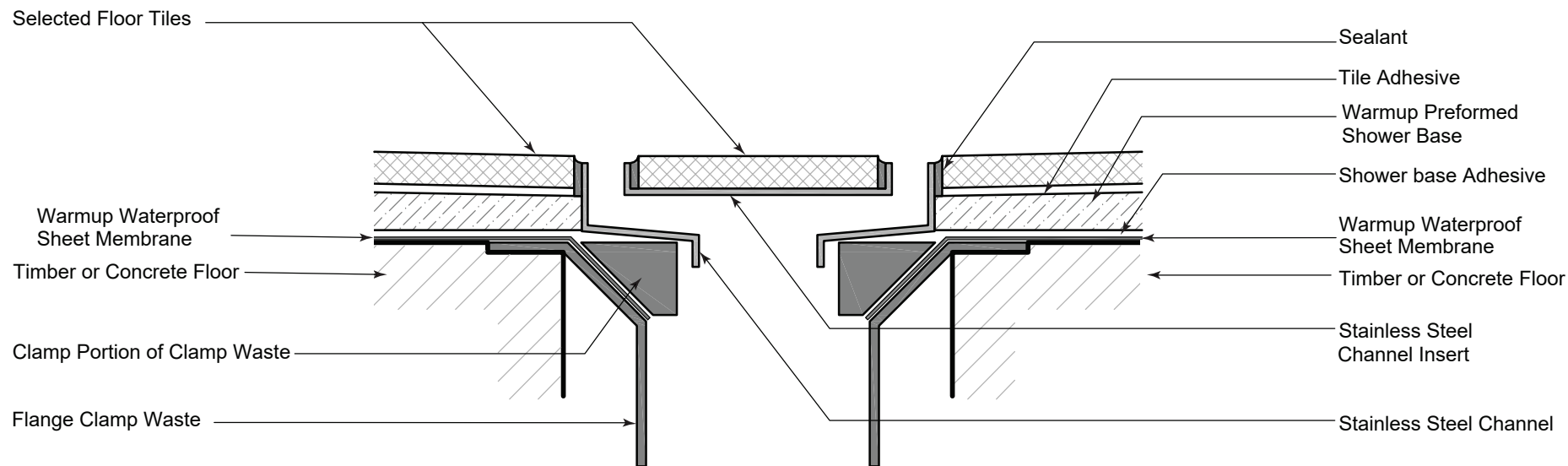




1:2

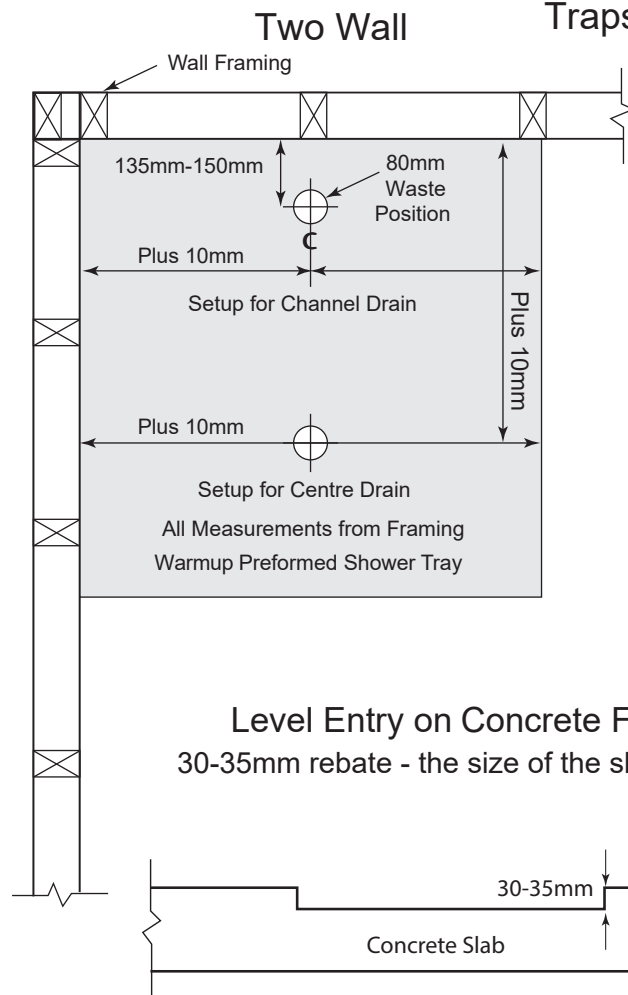


1:2

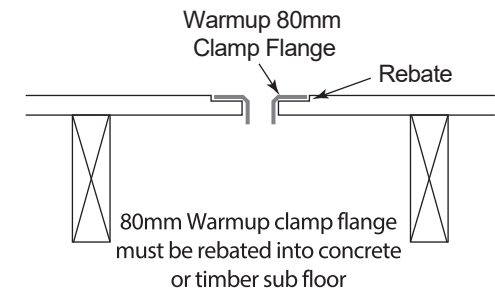
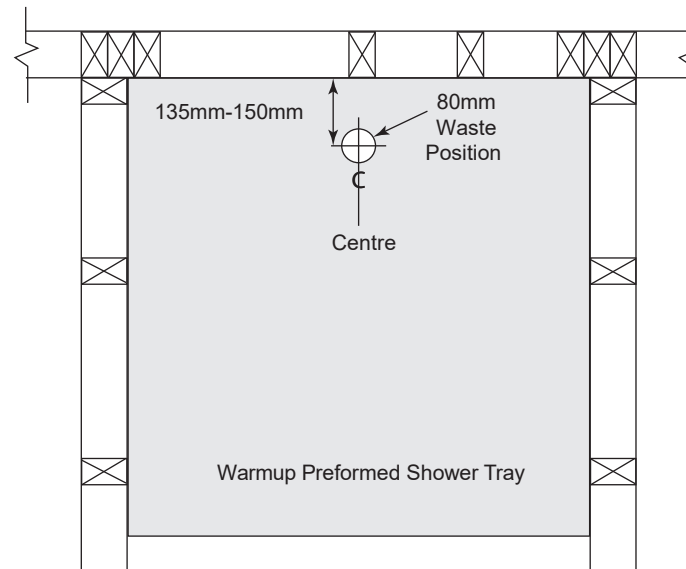


1:2

Setup for Gully Traps Plumber

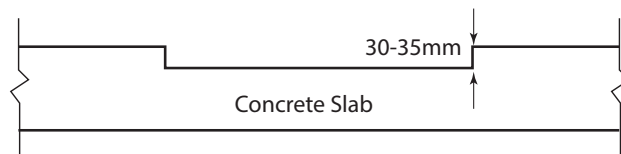


Alcove Three Wall



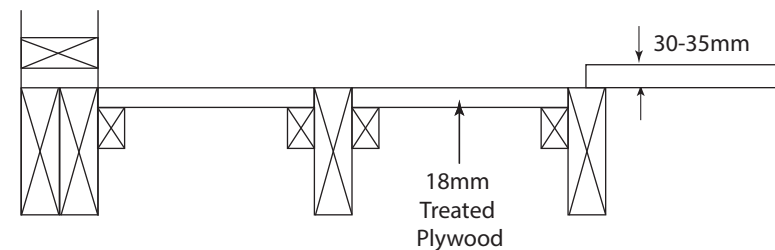
Level Entry on Concrete Floors

30-35mm rebate - the size of the shower tray



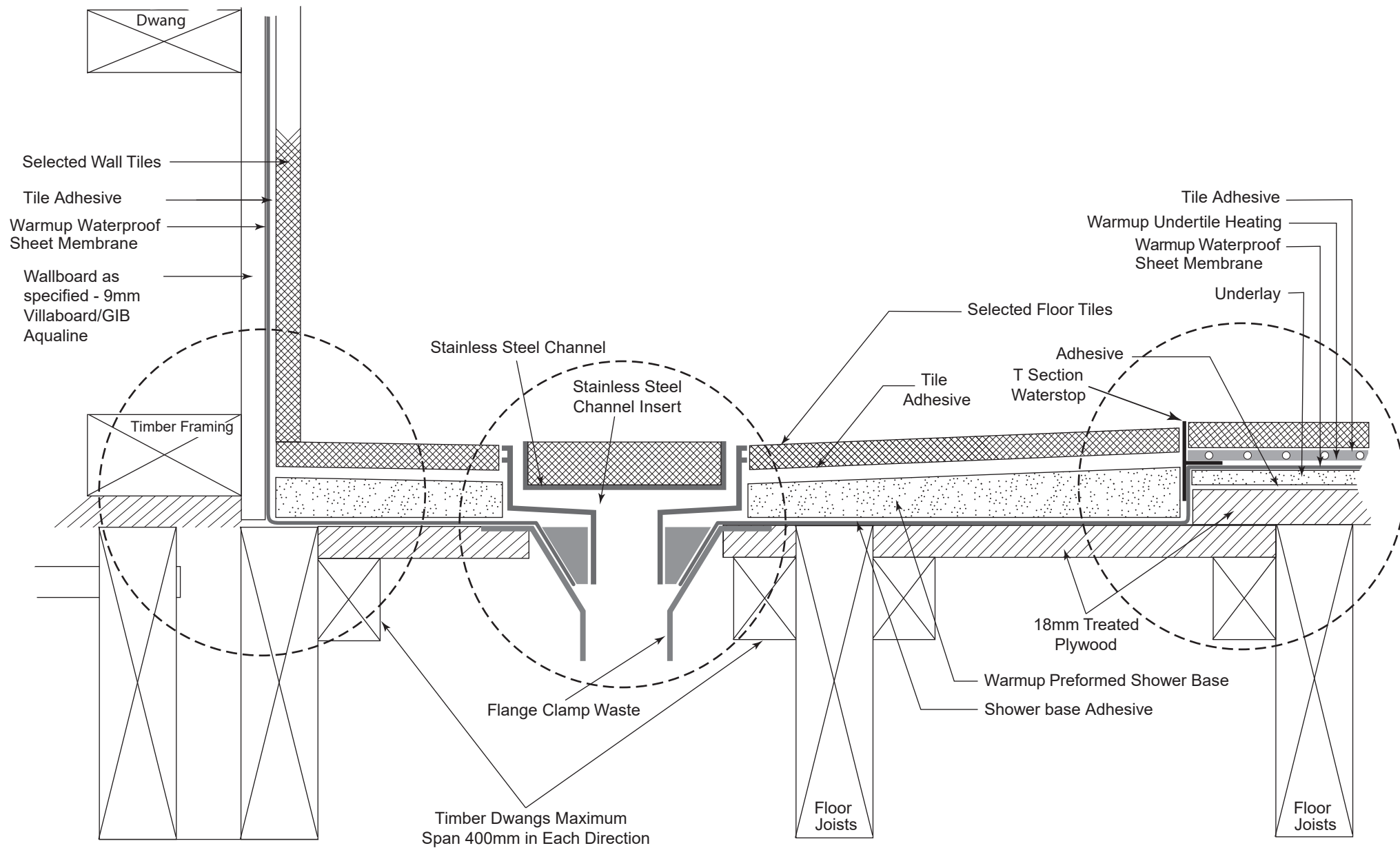
Level Entry on Timber Floors

Floor cut out to size of shower tray and infilled between the top of floor joists

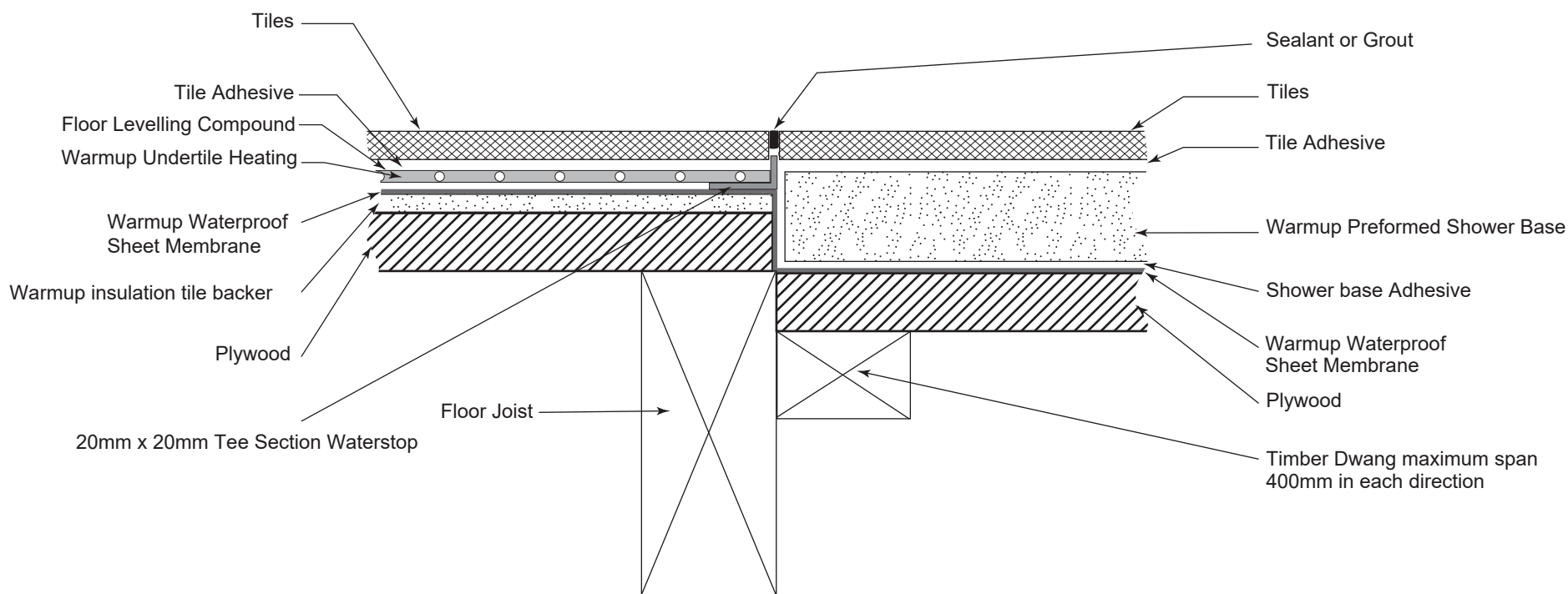


1:2

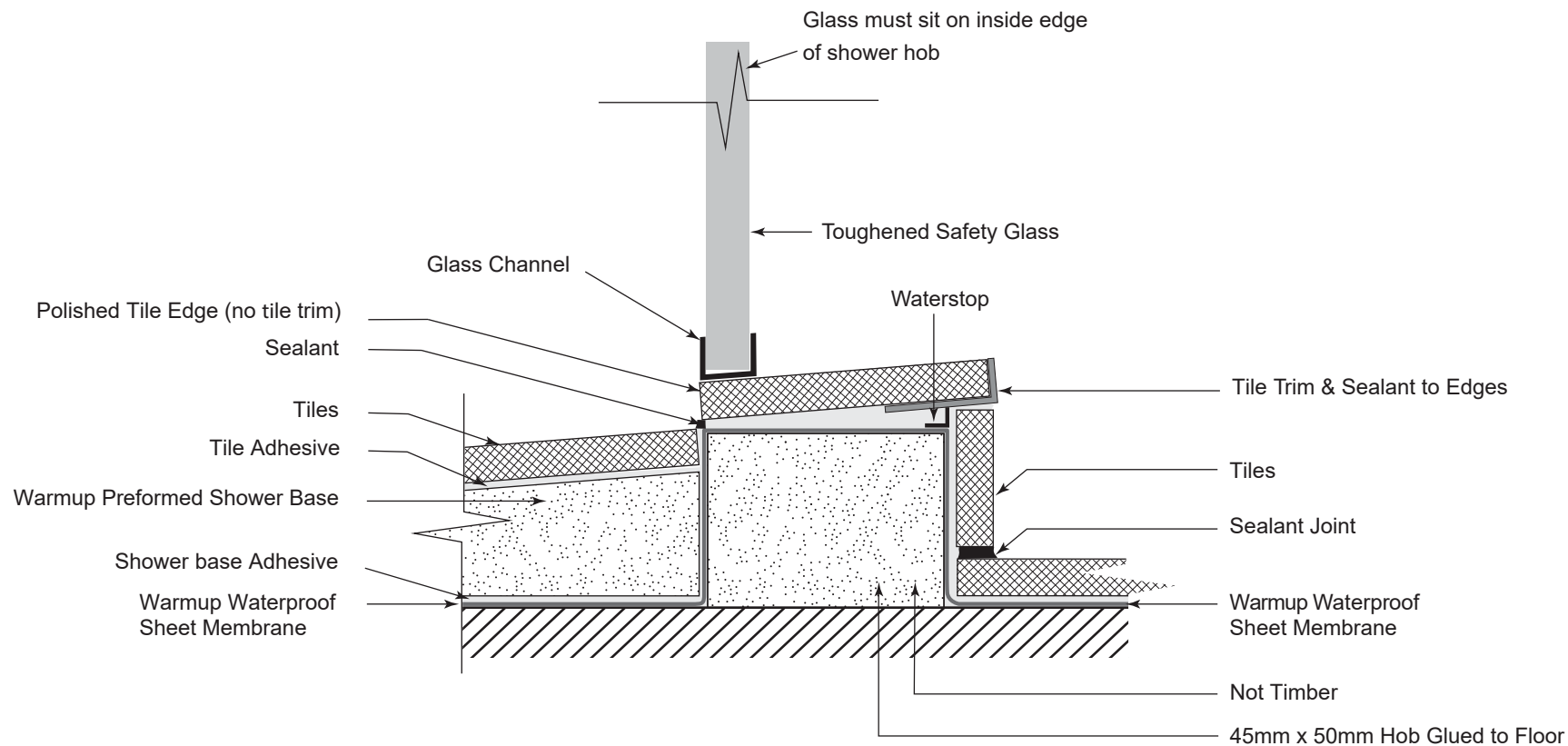
Additional drawings
with waterstop



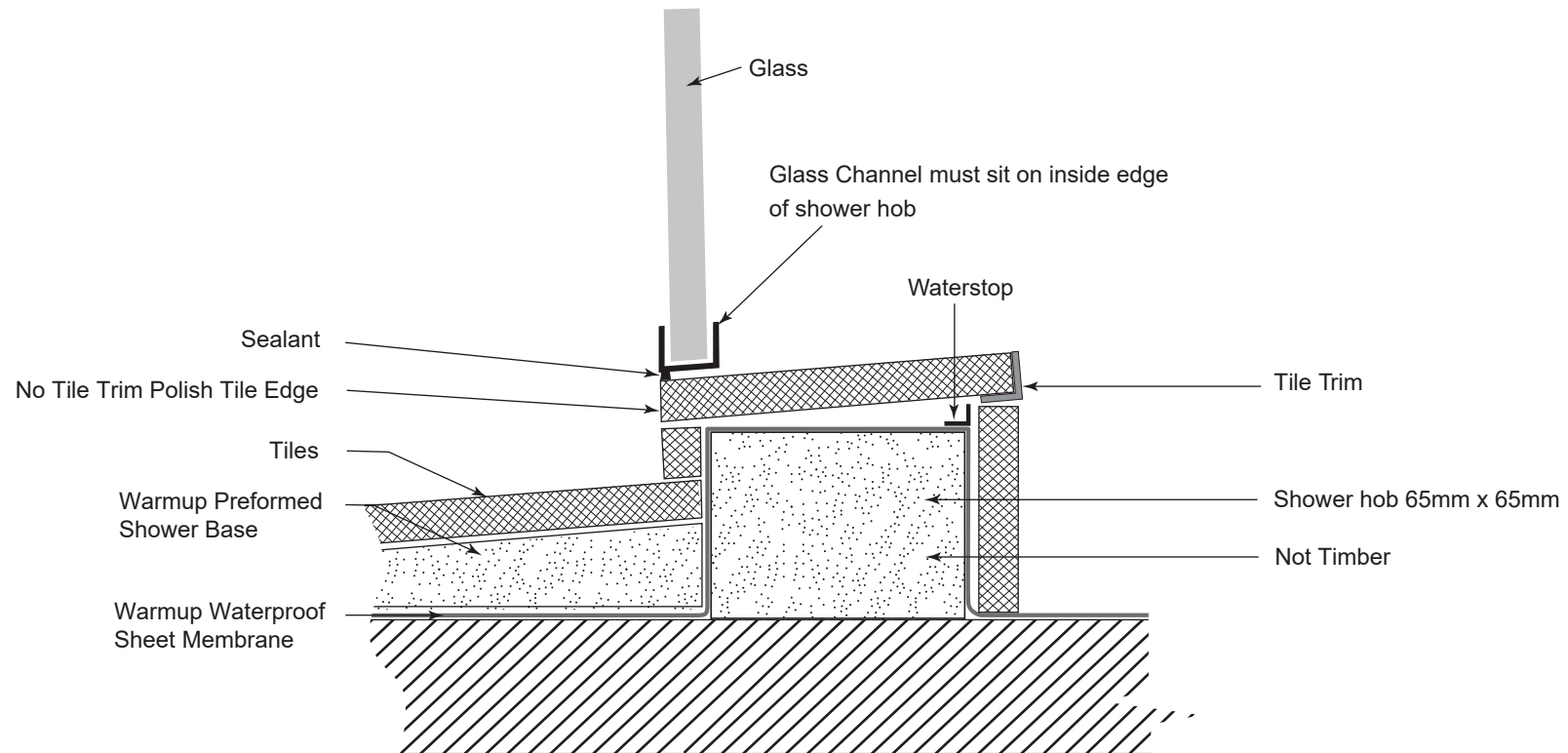
1:2



1:2

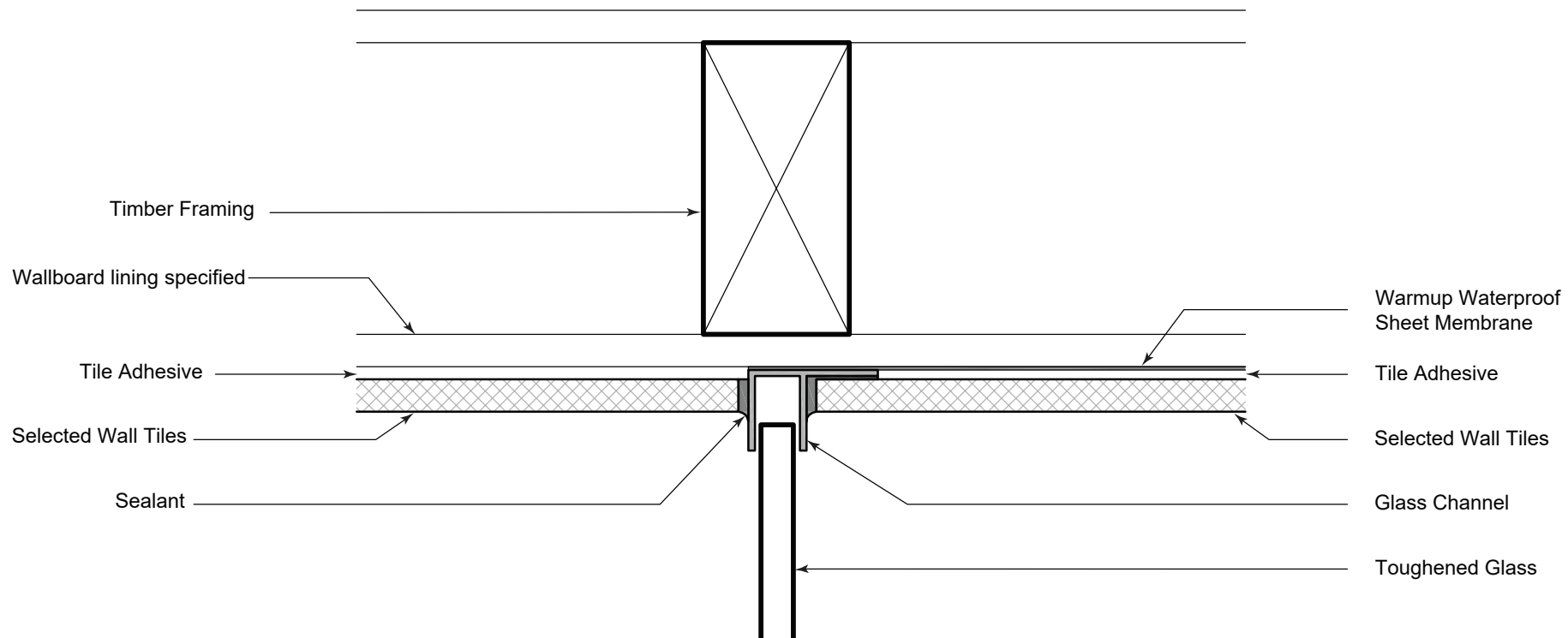


1:2

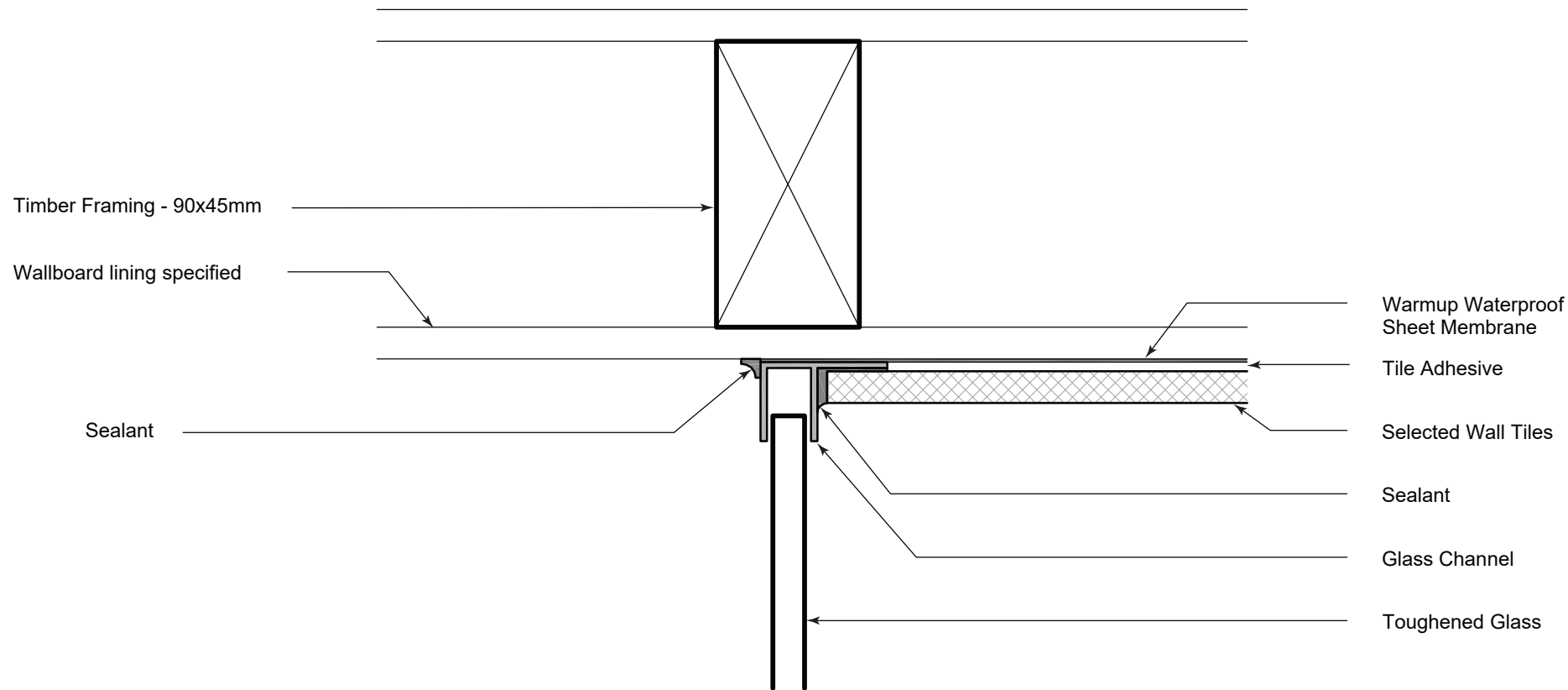


1:2

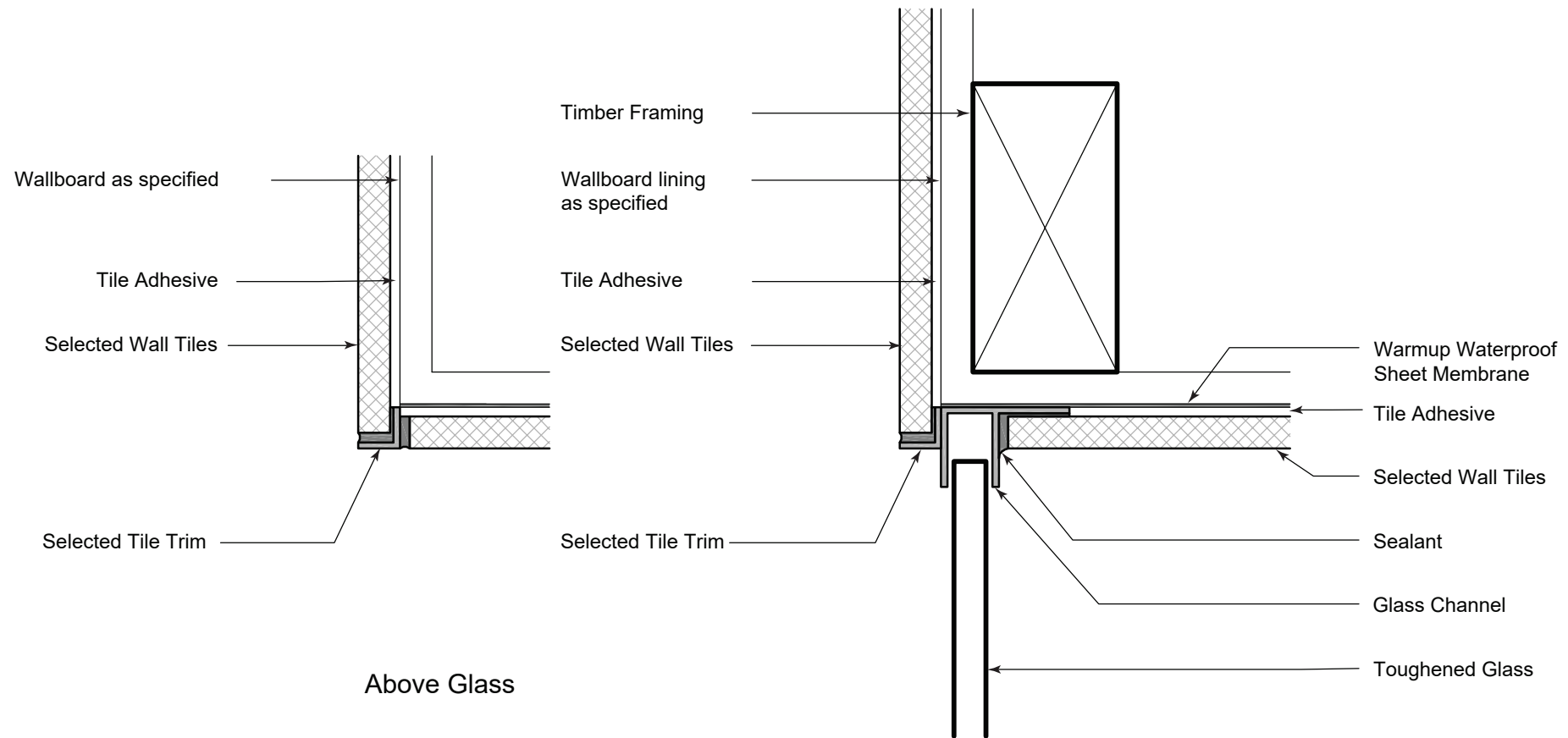
Cross Sections - (with Shower Glass Channel Details)



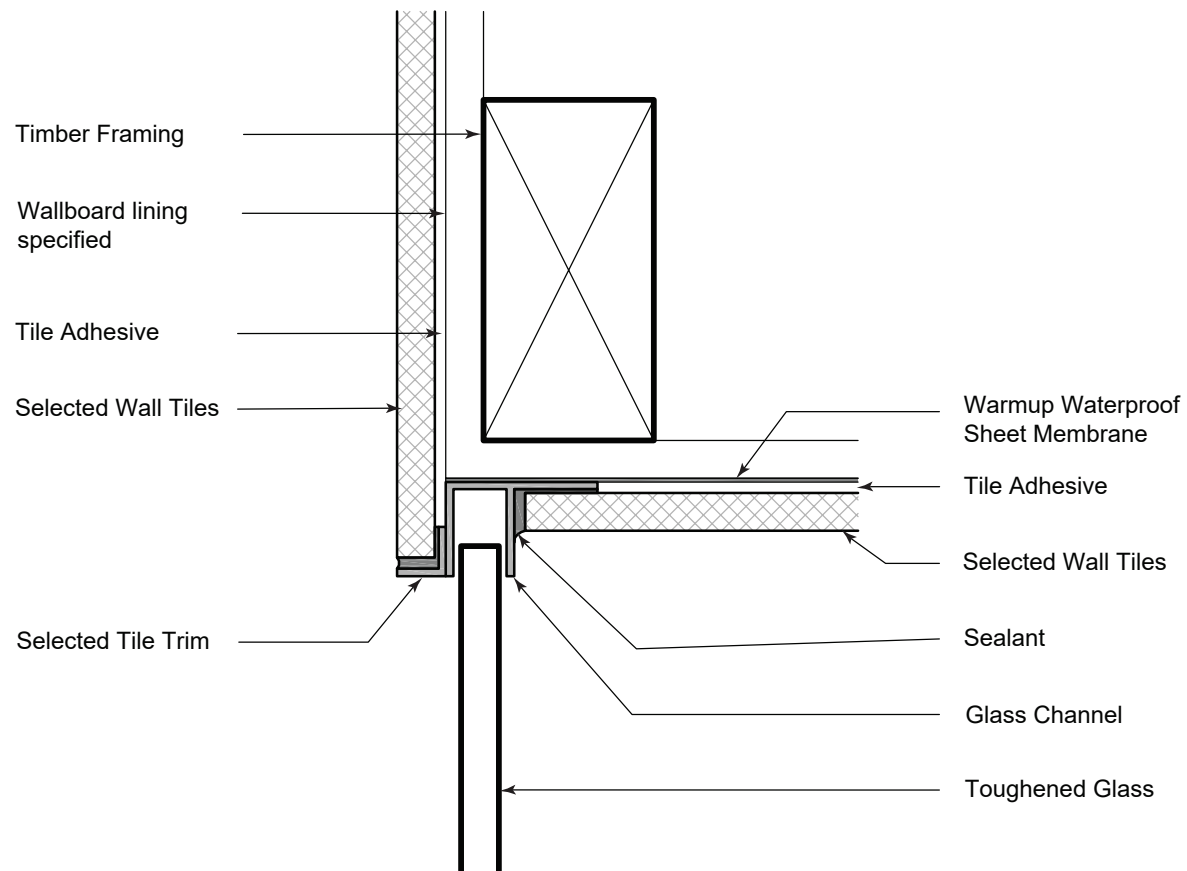
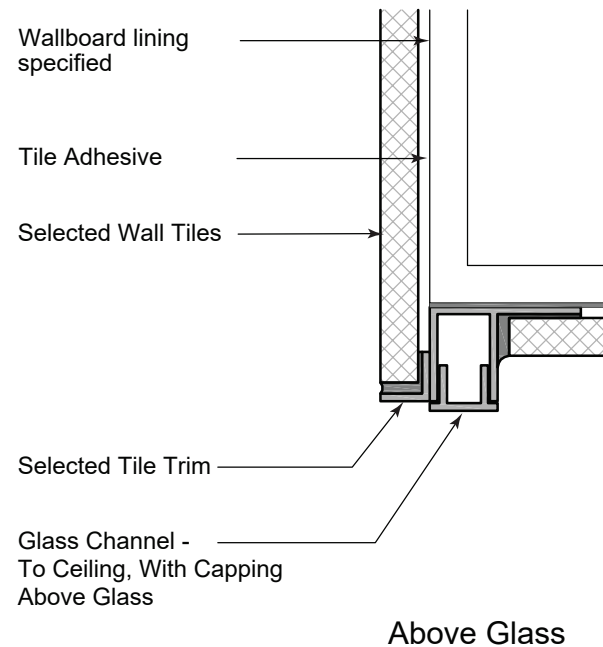
1:2



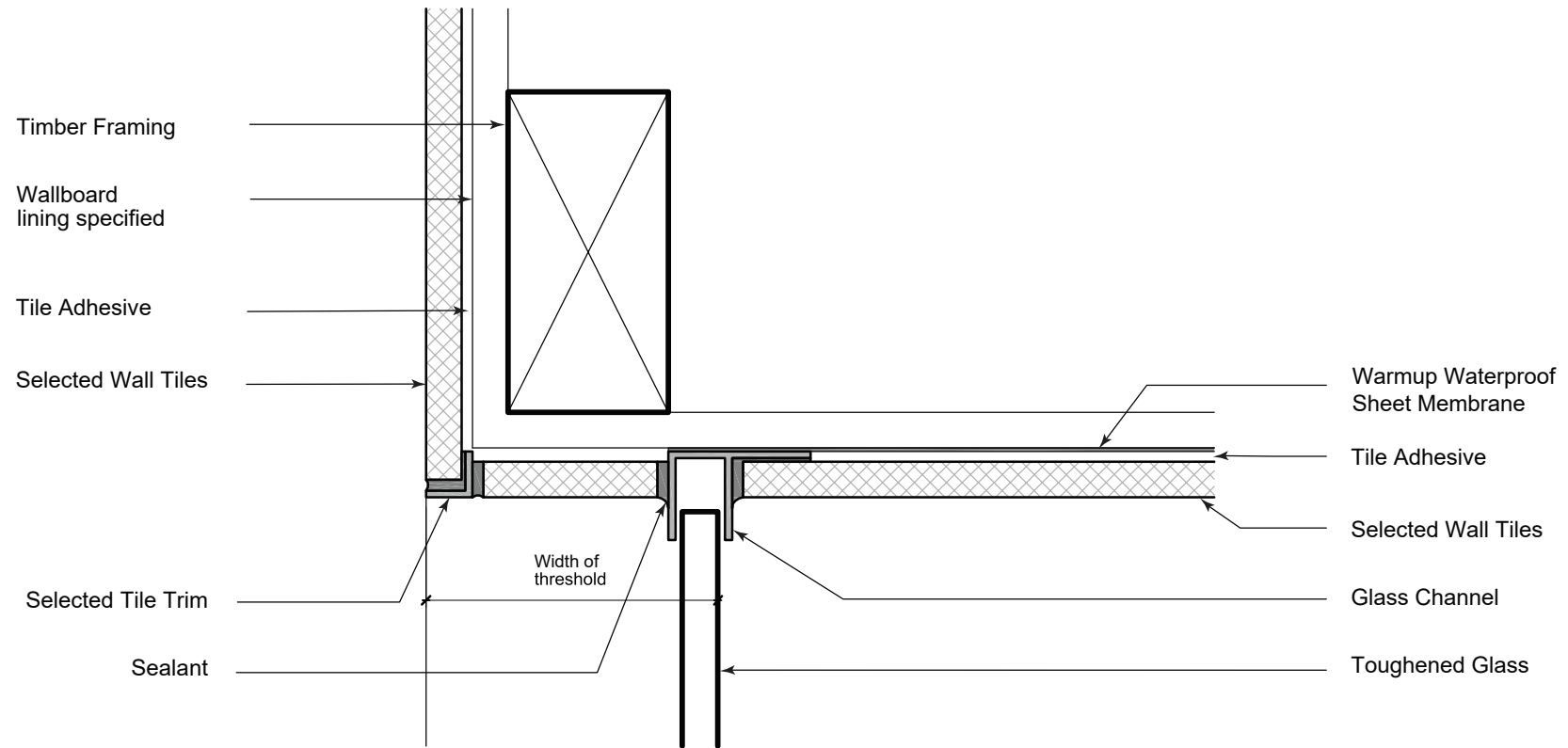
1:2



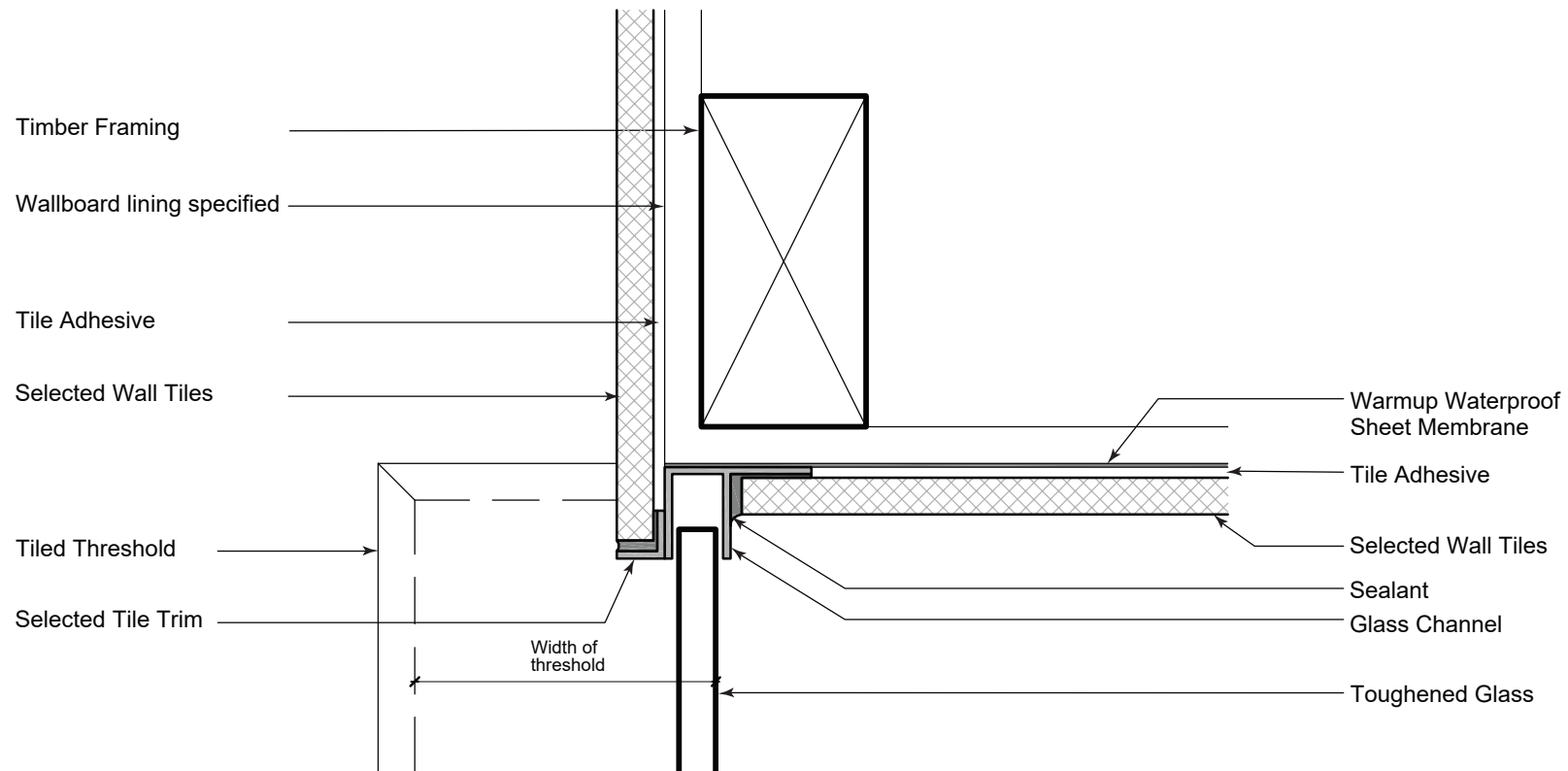
1:2



1:2

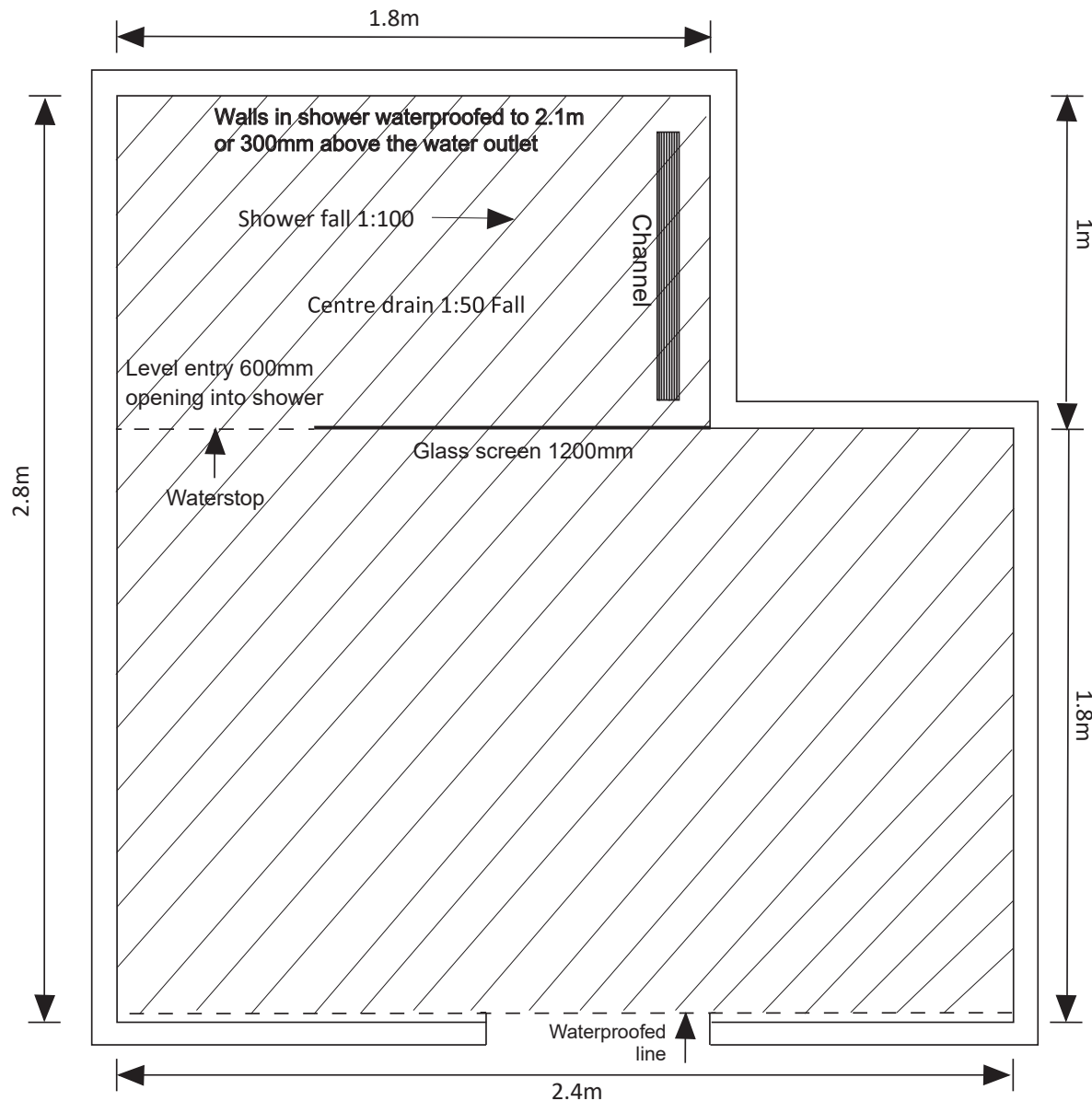


1:2



1:2

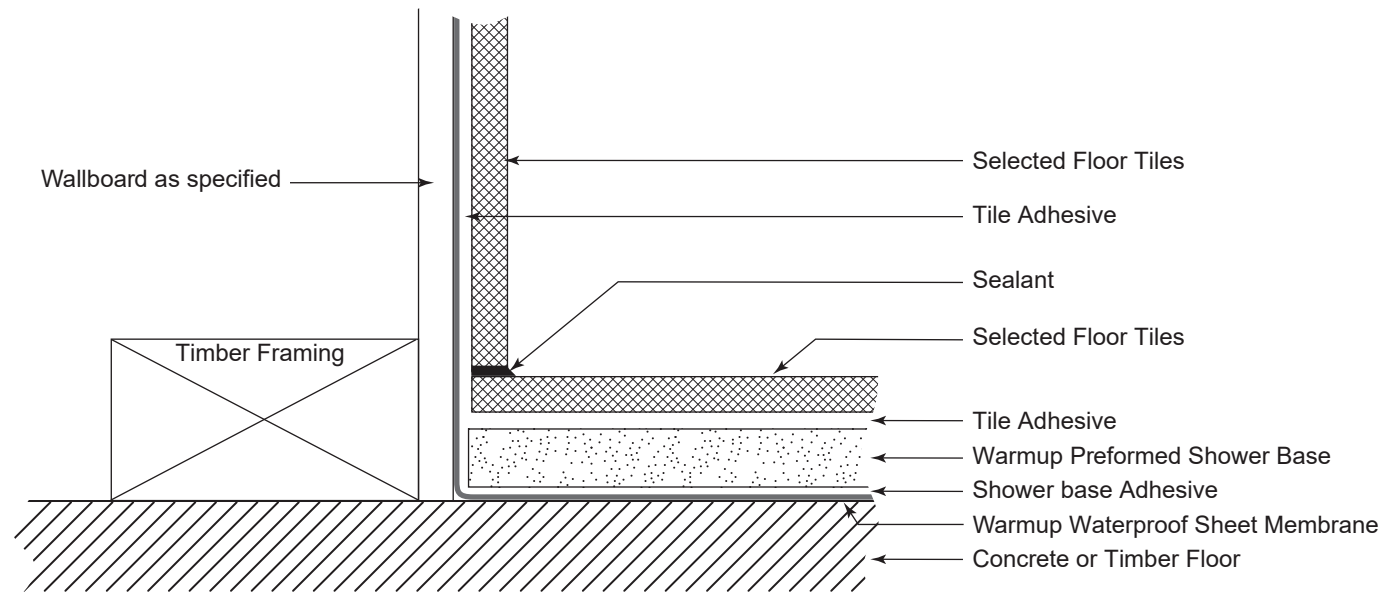
Miscellaneous Drawings



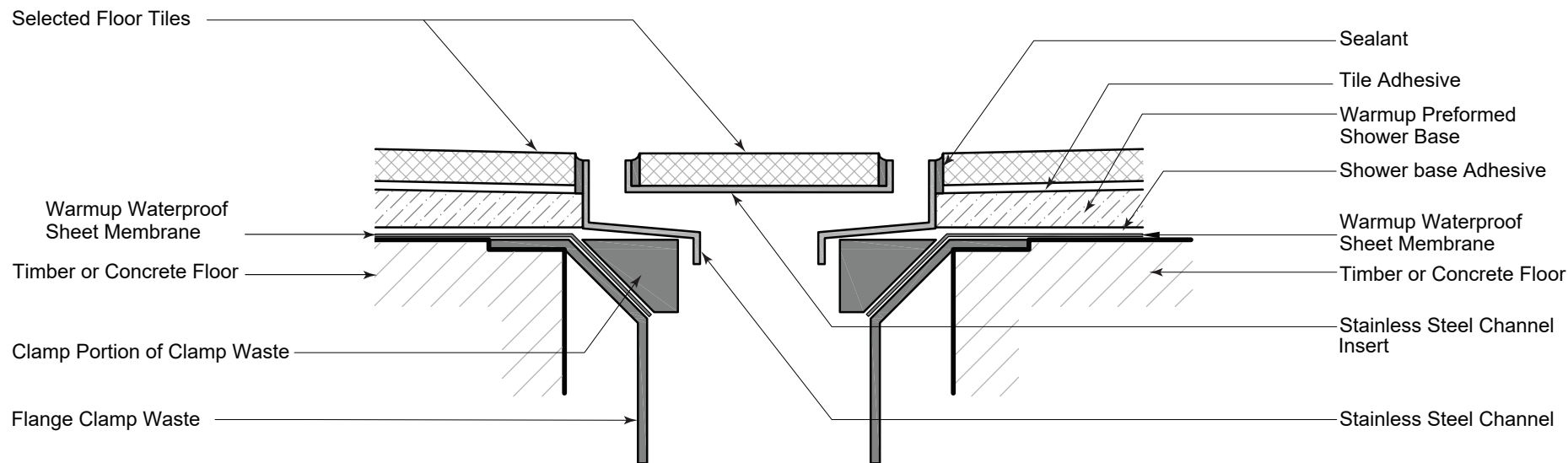
Installation Steps

1. The floor area must be cleaned free from oil, paint and any other contamination. The area must also be structurally sound, flat and level.
2. Mark out walls and floor area to be waterproofed using a Warmup recommended contact adhesive. Spray the shower base area and sheet membrane with adhesive. Dress the sheet membrane into an 80mm Warmup clamp flange. Secure the sheet membrane to form a pan liner coming up the shower 150mm weld up corner folds.
3. Cut the sheet membrane to fit the walls (allow for minimum 50mm laps on all joints. Glue the sheet membrane to the walls - make sure all joints are heat-welded.
4. Measure and cut the Marmox preformed shower base to size - glue into position using an impervious adhesive. Make sure all joints are filled with this adhesive.
5. Check falls in the shower base [Channel drains 1:100 and Centre drains 1:50]
6. Concrete floors - level entry three walls including glass screens. Extend the waterproofing out minimum 1m from the shower cubicle and all floor to wall junctions to be waterproofed.
7. Timber floors - level entry whole floor area must be waterproofed and floor to wall junction as well.
8. Make sure the waterstops are sealed onto the shower base or hob upstands.

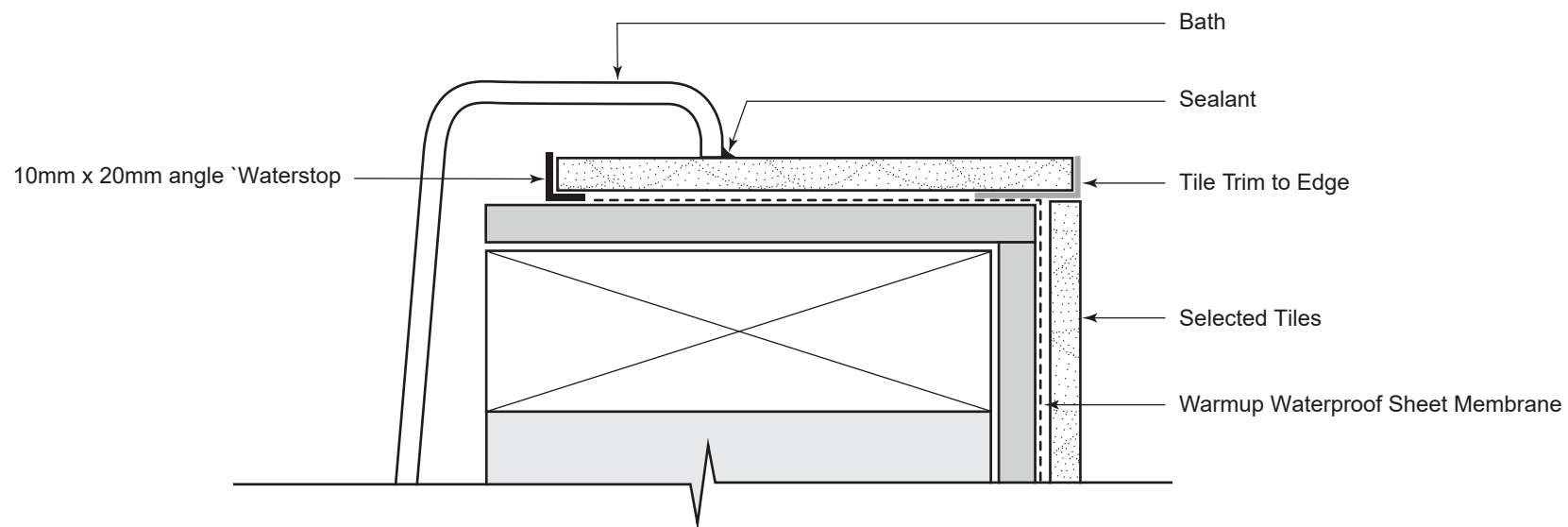
1:2



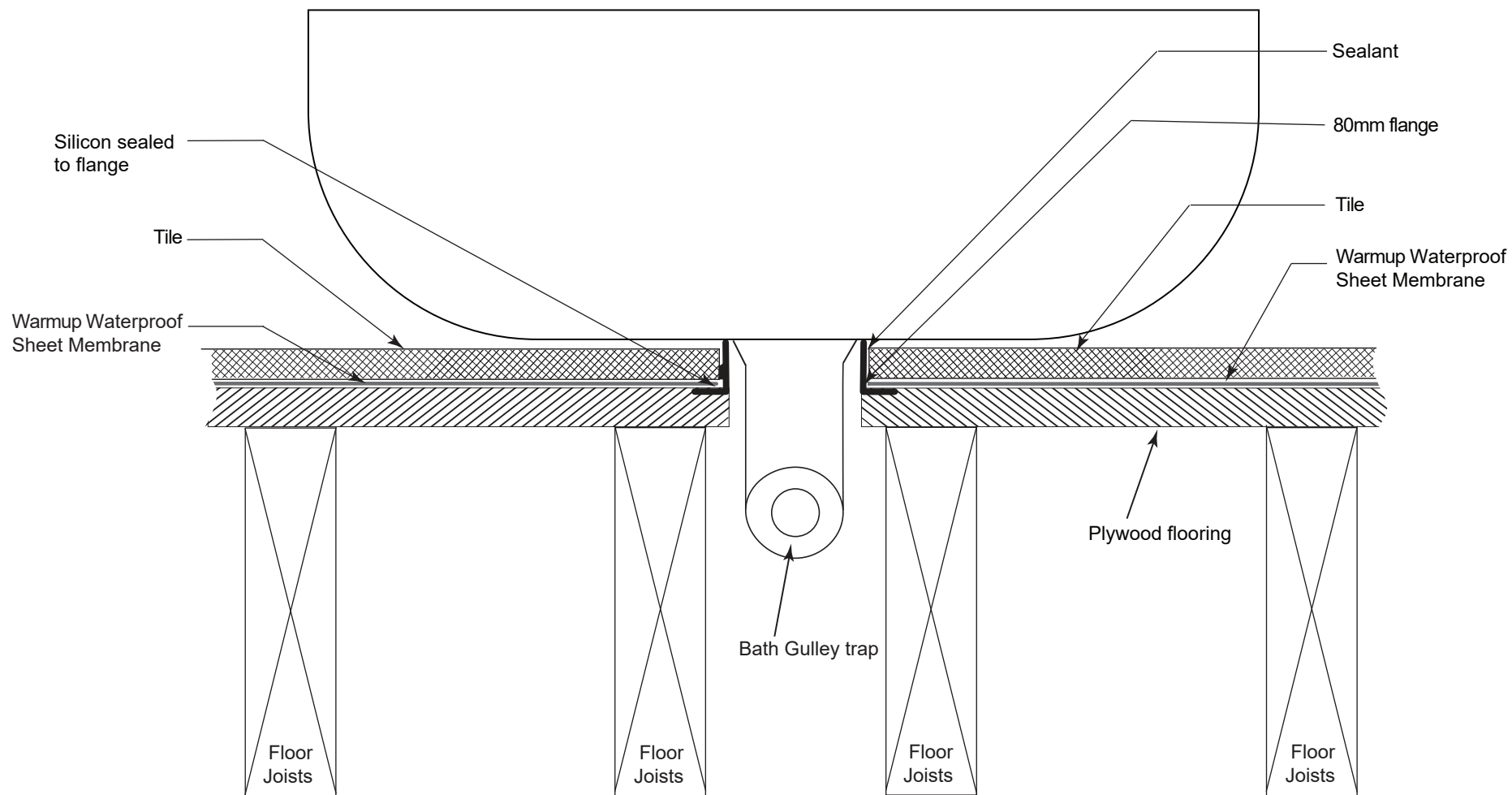
1:2



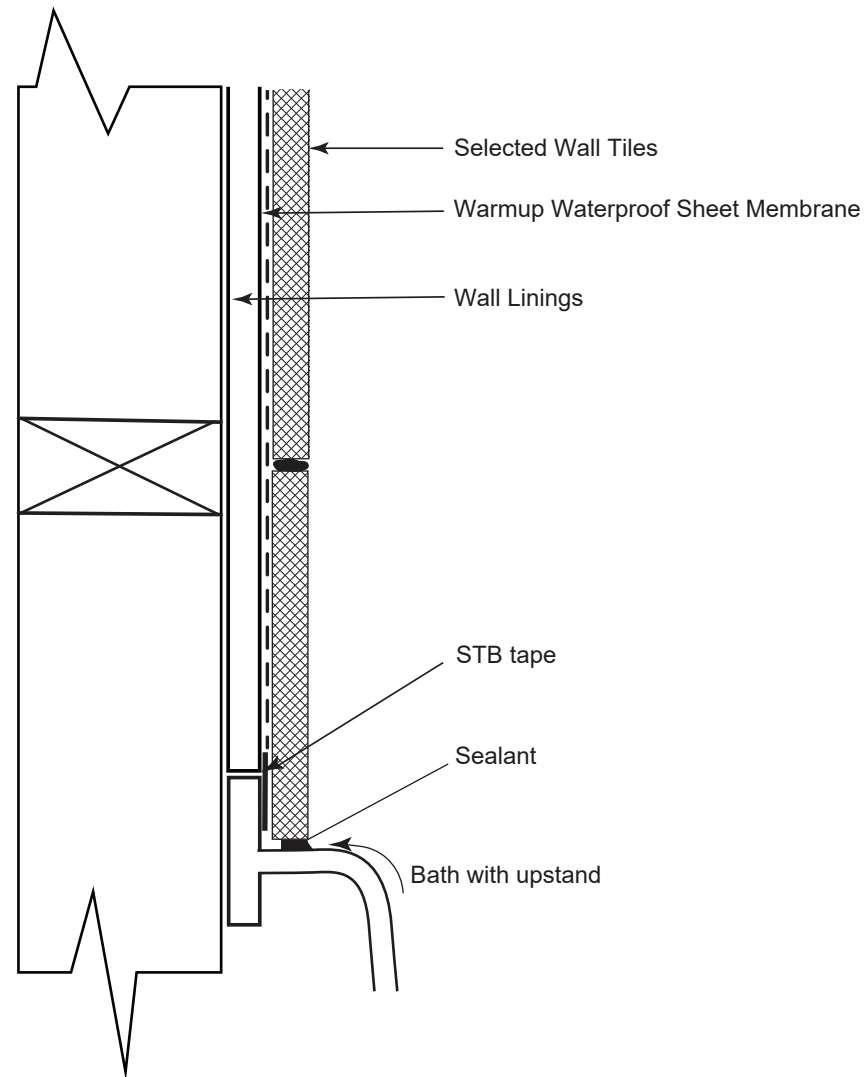
1:2



1:2



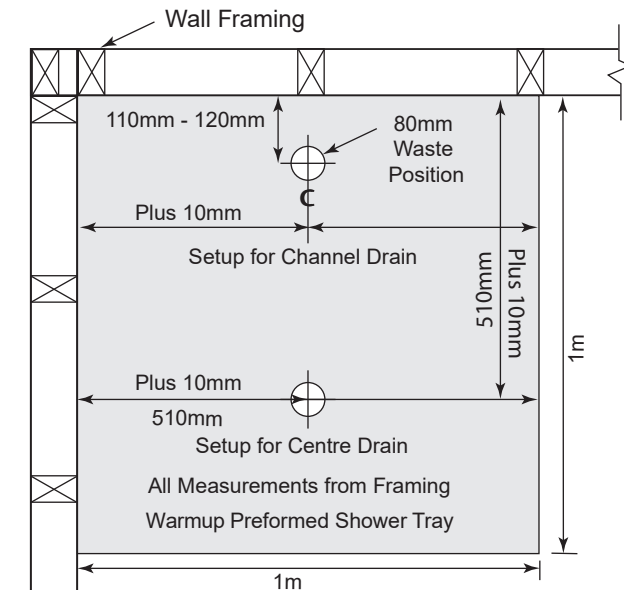
1:2



1:2

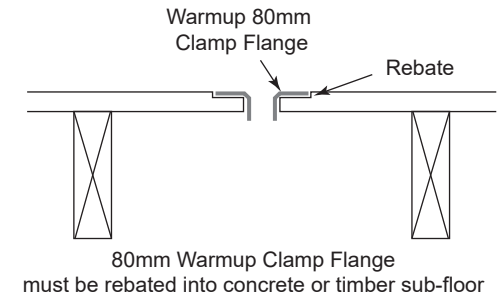
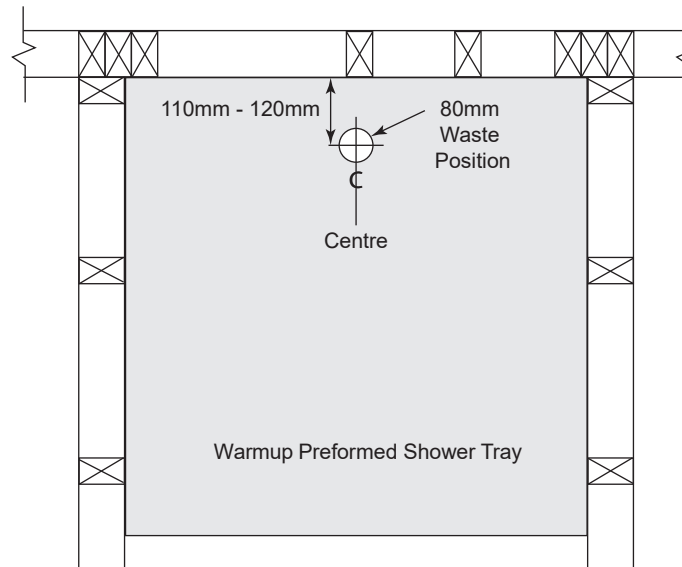
Setup for Gulley Traps (All measurements are shown from framing)

Two Wall



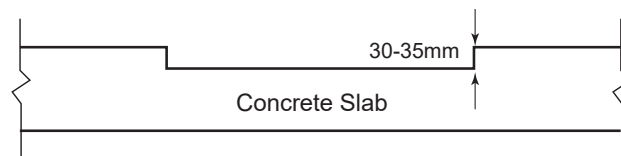
Note: Add 10mm for wall linings and tiles as indicated above.

Three Wall Alcove



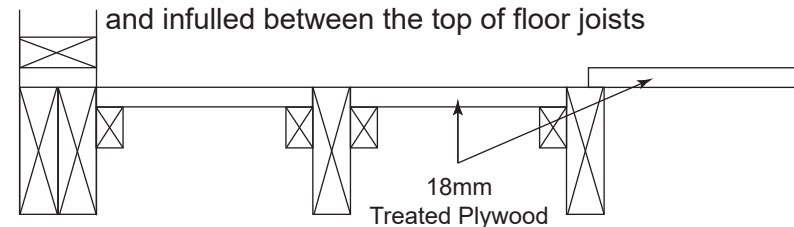
Level Entry Concrete Floor

30mm Rebate the size of Shower Tray



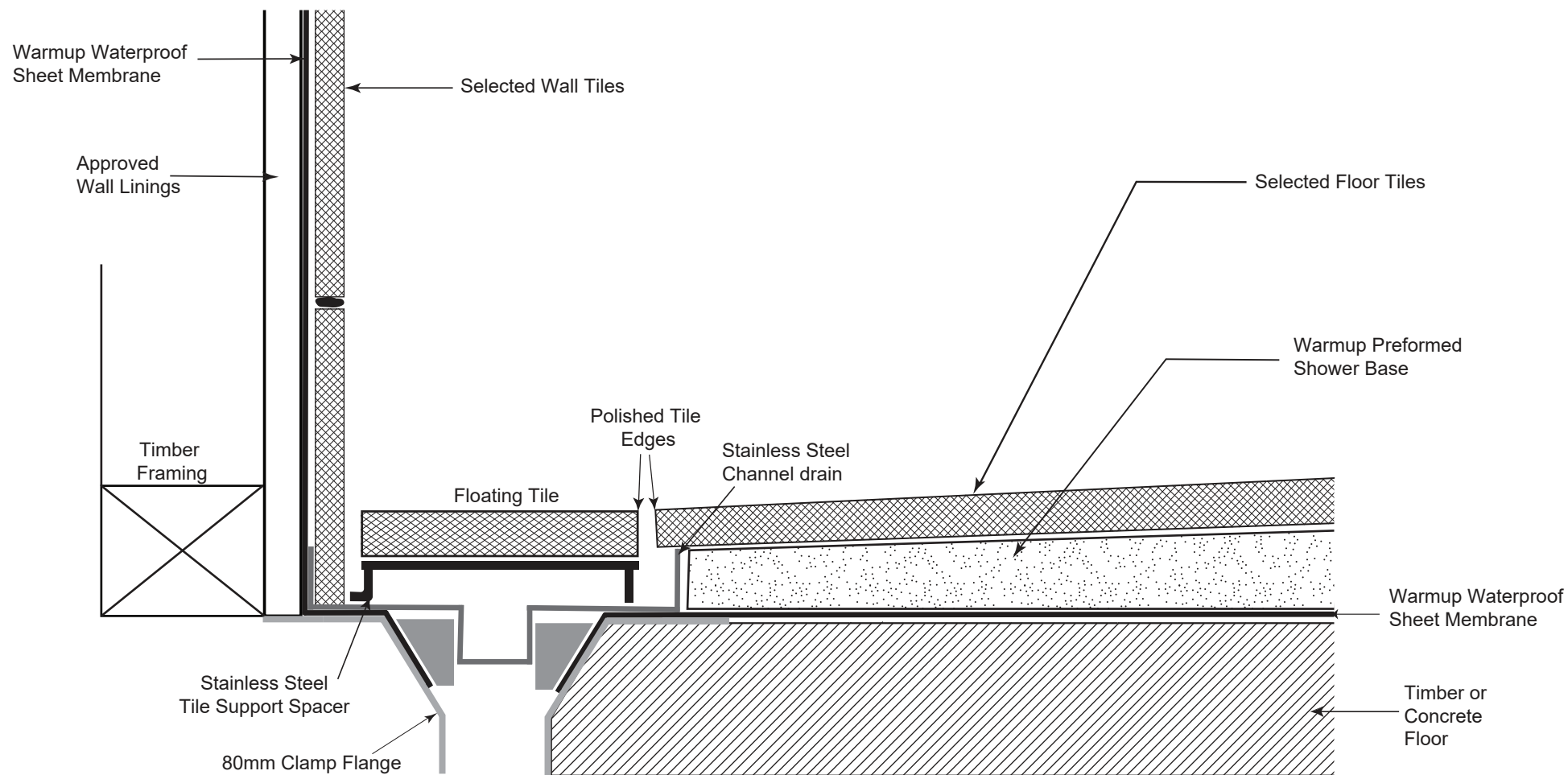
Level Entry on Timber Floors

Floor cut out to size of shower tray and infilled between the top of floor joists

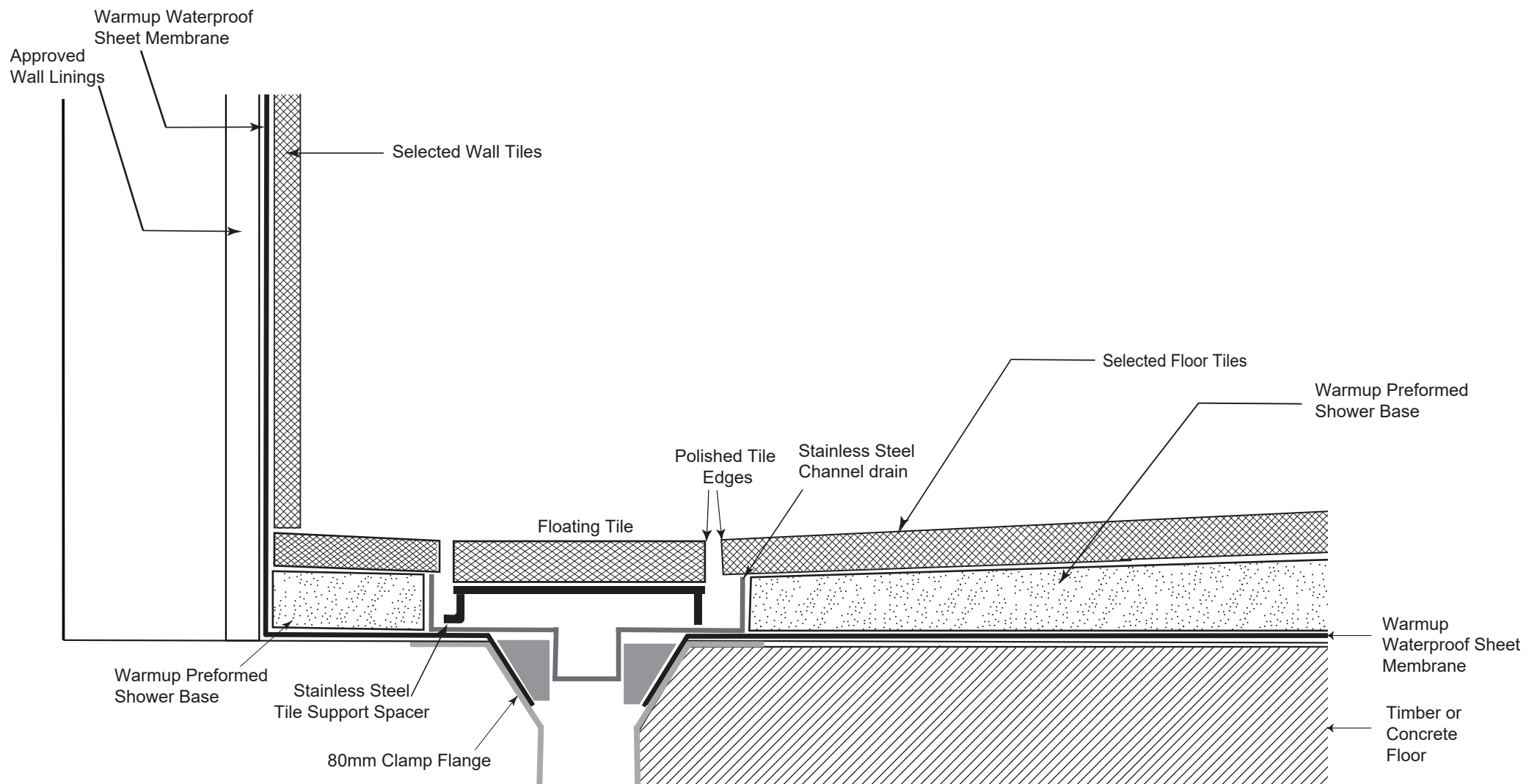


Plumber - please note all gulley traps are to be 80mm

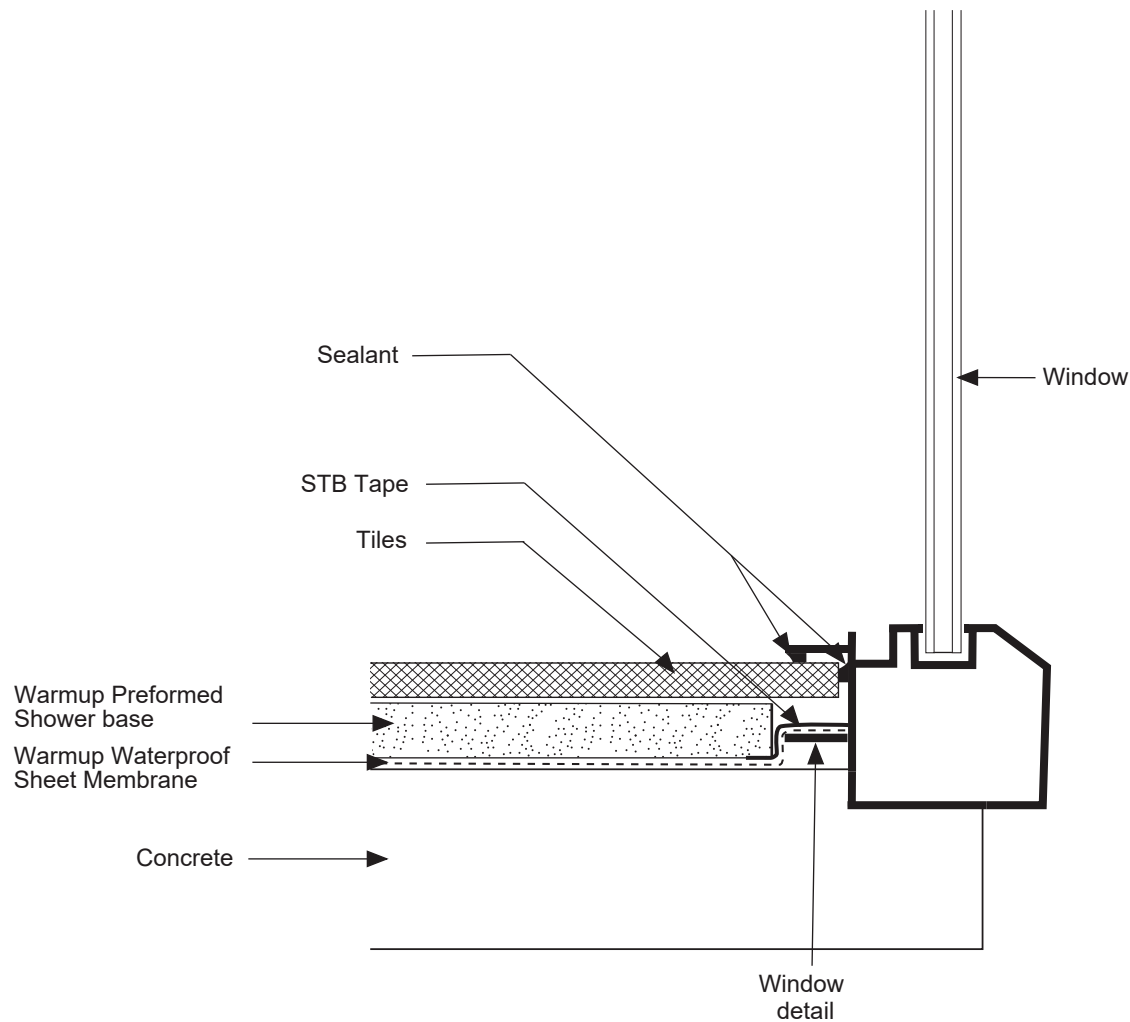
1:2



1:2

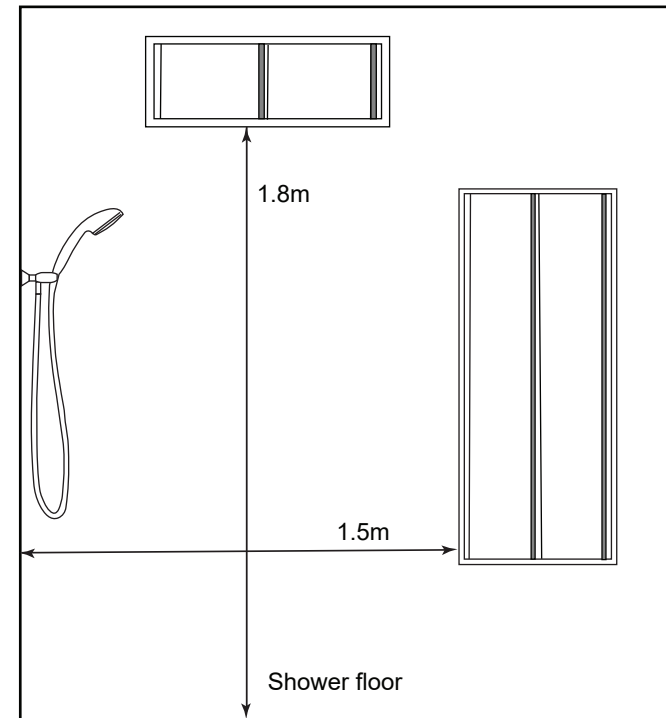


1:2

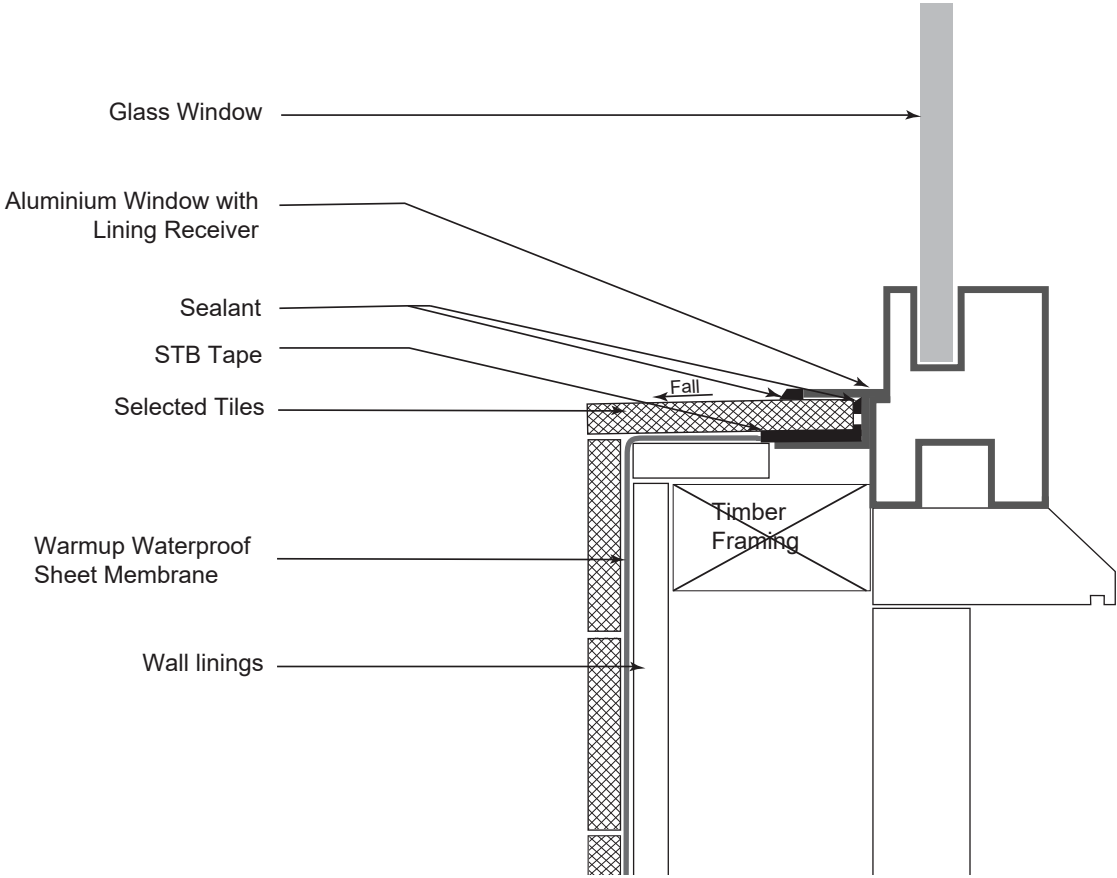


Window Requirements in Showers

Minimum 1.8m from the Shower floor and 1.5m from the shower head outlet.

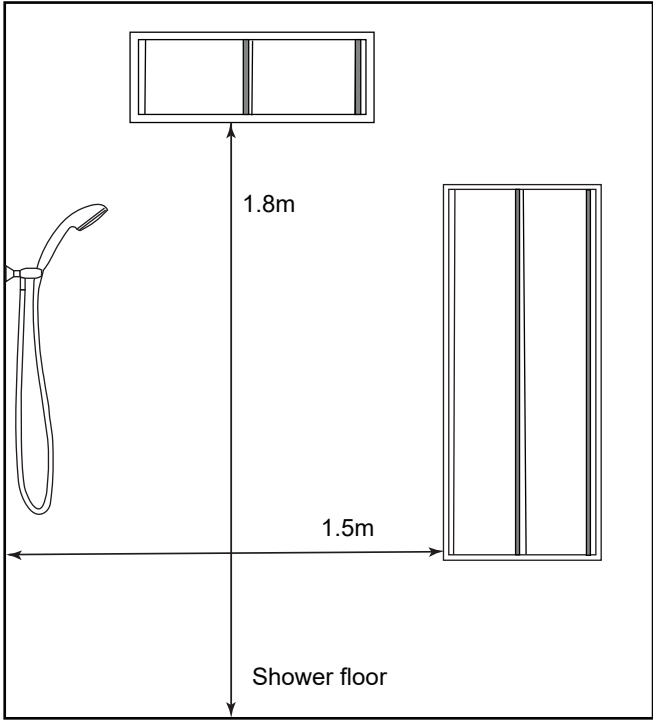


1:2



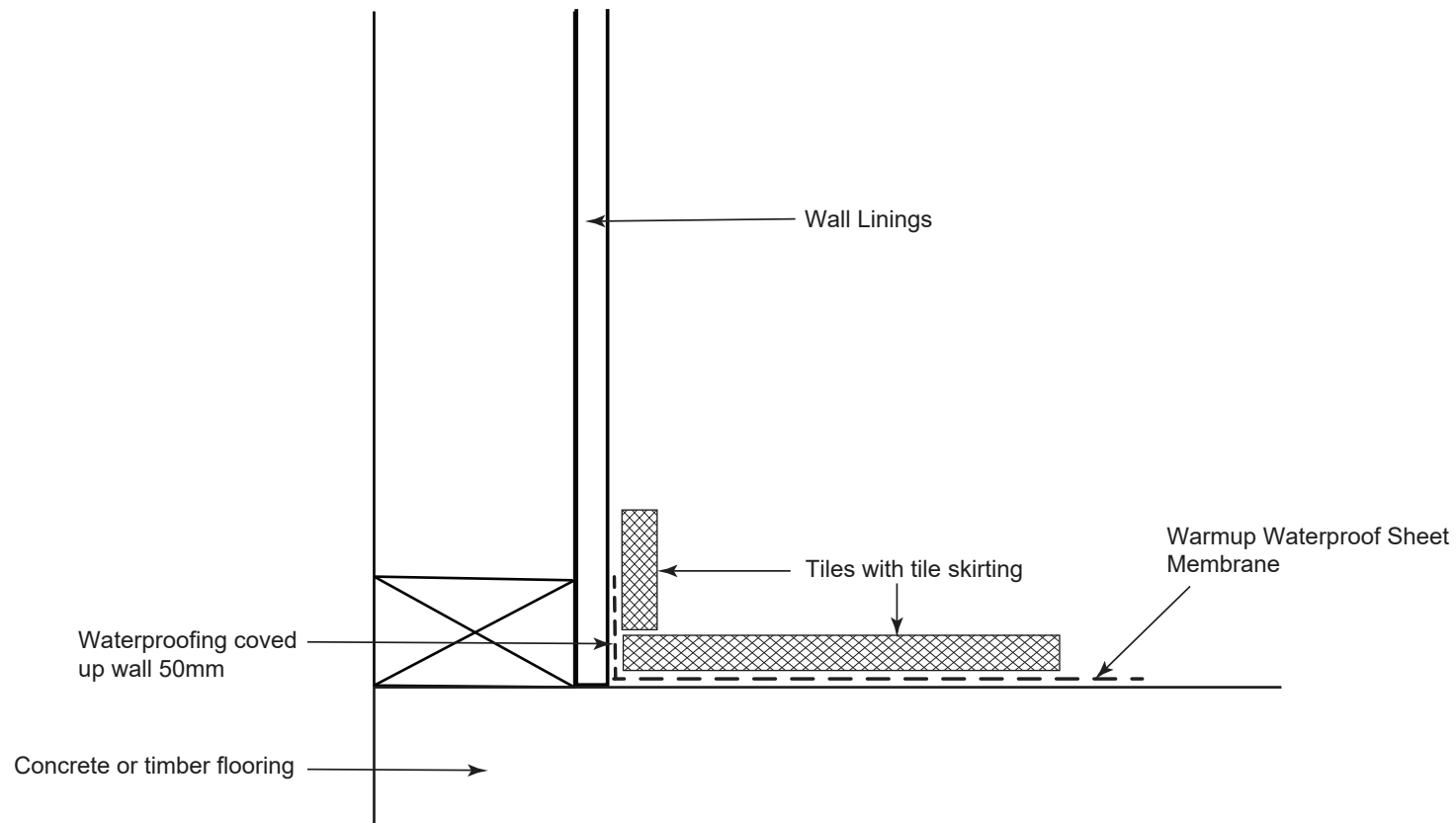
Window Requirements in Showers

Minimum 1.8m from the Shower floor
and 1.5m from the shower head outlet.



1:2

 <p>Underfloor heating Tiled shower solutions</p>	<p>Typical Jamb and Sill Internal Waterproofing Detail</p>	<p>Date 01/08/23</p>	<p>Detail D33</p>
--	--	--------------------------	-----------------------



Note: If using 6mm Marmox Insulation Board, this is installed on top of the waterproofing.

1:2